



JDV PROJECTS CAPABILITY STATEMENT

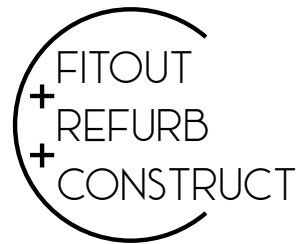


Unit 16, 78 Reserve Road, Artarmon NSW 2064
+61 (2) 9805 6100
info@jdvgroup.com.au
jdvprojects.com.au

jdv projects
construction • interiors • refurbishment

ABOUT JDV PROJECTS

At JDV Projects, we recognise that our reputation is only as good as our last project, therefore every project, large or small is executed with the same level of commitment, professionalism and attention to detail.



Now in our 24th year delivering refurbishment, fitout and construction projects, the team at JDV will work with your business to create an extraordinary environment and develop an enduring relationship with your business.

With capability and track record in projects ranging from \$20K to more than \$20 Million across the Eastern seaboard states, our interiors, refurbishment and commercial construction teams work seamlessly to deliver your project on time, on budget & to the highest standard possible without compromise.

Our business is built upon our core values of trust, loyalty, respect and integrity. Our valued clients and business partnerships ensure that continued referrals and repeat business is testament to the service and experience we deliver.

JDV Projects bring a unique approach to the fit-out industry. We have an experienced team who have a range of specialisations to ensure that whatever your unique requirements, or industry, we will select the ideal team for your project and vision.

Our approach to each project is structured and process driven. We have 3rd party accredited management systems and Global Compliance Certification (GCC) according to:

Quality Management	ISO 9001:2015
Work Health & Safety (WHS)	AS/NZS 4801:2015
Environmental Management	ISO 14001:2001
NSW Government WHS Management System Guidelines Certification.	

We have an uncompromising commitment to excellence and will meet your challenges with solutions to ensure that working with us is a positive journey; before, throughout and after your project is complete.

MISSION

At JDV Projects, we embrace change and the evolving world of workspace fitout.

Our mission is to align ourselves with your business vision and aspirations to create an efficient and productive environment with the ability to flex and adapt as your organisation evolves.

We are committed to developing an enduring relationship with our clients and to create extraordinary workspaces that exceed expectations.

VISION

Our vision is to consistently push the boundaries of design, technology and construction to improve the way in which people interact, collaborate and function in the workplace.

We invest in the best talent, and partner with leading designers to ensure that our clients receive the best possible solution and experience during the life of their project and beyond.

THE JDV LEADERSHIP TEAM



JASON DE VOS
Managing Director

A degree qualified construction professional, Jason launched JDV Projects in 1997, now in it's 24th year of continuous business.

Jason has over 30 years of industry experience across all facets of construction and refurbishment, commercial interiors, multi-storey large residential and industrial construction.

With a focus on superior client relationships and service, Jason is committed to providing our clients with the solution and value they seek, and the expertise they deserve.

Jason has assembled an exceptionally talented and professional team at JDV Projects. The JDV team are steadfastly client-focused and bring a wealth of knowledge and guidance to each individual project to resolve challenges and to create a positive fitout journey for all clients.

His reputation for maintaining a connection to each project is key to the success of the JDV Projects as well as the relationships he develops and maintains.



RAY LEVIN
General Manager

As General Manager, Ray is responsible for ensuring that all operational aspects of the JDV Projects business run smoothly and cohesively.

With a qualification in Project Management, Ray has been in the construction industry for over 30 years. Ray founded and managed his own construction and project management business in South Africa prior to emigrating to Australia.

In Australia, Ray has worked with Tier 1 commercial construction companies across a diverse range of projects including refurbishment, fitout, healthcare, aged care, education, government sector & large scale residential.

Ray's experience and professionalism ensures that our clients receive the very best advice, guidance & professional service they expect throughout the entire project lifecycle.



PROCESSES & SERVICES

At JDV we provide a seamless end-to-end service for our clients.

At JDV we use an integrated approach to assist during the design phase and deliver a unique and efficient environment.


From the initial Consultation and Briefing through to handover and warranty service, you will have one point of contact for your project. You will have full visibility of the programme and progress and a trusted professional will be on hand to answer any queries and to keep you up to date every step of the way.

JDV will work closely with you to ensure that your drivers for change are at the forefront throughout the process.

We provide a seamless end-to-end service for our clients. This service can be tailored for each client but typically involves 2 distinct service offerings delivered as an integrated management service. We can assist with a full turn-key solution, or simply help with one of the steps in the process.

JDV will work with you to suggest the most appropriate delivery method for your budget, timescale and vision.

OUR 6-STEP PROCESS



BRIEF
PROCESS CHANGE
SPACE REQUIREMENTS
PROPERTY


We will spend time with you to understand your brief, your requirements, both now and in the future.

Your drivers for change are as important from your space and design requirement to your desire for process change within your company.

We will discuss your vision and needs and provide concepts that respond to your business activity and interaction between staff and teams.

We would agree with you a process and map out the steps in the journey – a new work place can be a catalyst for introducing process change or improvements within a business.

JDV will work with you, if required, to identify and assess premises for suitability and performance. We will prepare a test fit to ensure the proposed location can satisfy the project brief.



CONCEPTS & VISION
BUDGET OBJECTIVES
COST PLAN
ROADMAP

JDV Projects will produce a comprehensive sketch or preliminary planning concepts to match your vision and needs, focusing on workspace organisation while exploring new ideas and fresh concepts in work practices and space planning that respond to your business activity and interaction between staff and teams.

We will prepare a detailed preliminary cost plan and review to ensure it meets the budget objectives whilst being realistically achievable – this provides a road map to the project's financial management and control against which future design and specification decisions can be made.

Implement a strategic approach to incorporate and evaluate the 'must-have' versus the 'like-to-have' elements and features and discuss technology options and the most recent improvements and trends available for the clients project.



DESIGN OPTIONS IF REQUIRED
3D MODELLING
STATUTORY APPROVALS

With your chosen designer, we will develop a number of options that will give the best solution for the best outlay.

3D modelling can show clients first-hand what the working environment will look like – whether it be the latest in staff breakout facilities, office décor, internal living green walls or contemporary reception designs, an image board for discussion about the look and feel of the new workspace will also be produced.


All Statutory Approvals will be dealt with by JDV.



VALUE ENGINEERING
LEVERAGE INDUSTRY RELATIONSHIPS
COST V'S FUNCTIONALITY

New, modern and cutting edge does not have to mean expensive – our experience and industry relationships will ensure you get the best available look and feel, technology and industry trends at a price you can afford.

With careful value engineering for your workspace, JDV can present options for the substitution of materials and methods with a less expensive alternative, however by no means sacrificing functionality or results.




CONSTRUCTION
ONE POINT OF CONTACT
HANDOVER
RELOCATION

Our experienced project and site managers will translate the final plans in to the end result and ensure your final environment or build is as it was designed, documented and approved.

Surprisingly, the construction phase often takes the least amount of time – once the final documentation is agreed upon, you will be surprised at what can be achieved in the short programme.

When it comes to construction, the partnership between our Project Managers and Site Manager is exemplary. Communication between them and you - the client - is a key priority, from the beginning until your handover day.

Relocation should be equally as trouble free. The move is well planned and executed with a streamline process.



MAINTENANCE
TRAINING
WARRANTIES
ONGOING SUPPORT

A full detailed list of maintenance and warranty details will be available on handover, ensuring all training and warranties are in place

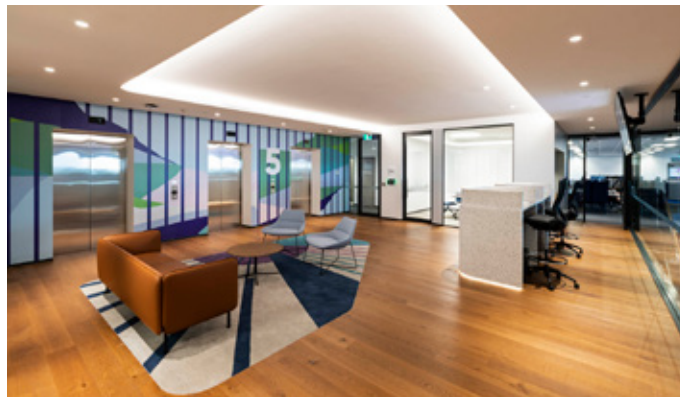
JDV Projects and the team will still be there for you after handover and will work with you over the coming months to ensure everything works as it should.

JDV pride ourselves on long-standing relationships, and will be available to you long after the project is complete.

PROJECT EXPERIENCE



SEEK, 1,000 sqm



GREENSTONE FINANCIAL SERVICES

JDV Projects were engaged by Greenstone Financial Services to create an exciting new 10,500sqm workspace at their Western Sydney site in Bella Vista. In collaboration with WMK Architecture design team, the modern office was designed and built to consolidate the Greenstone team under one roof and create a cohesive and collaborative environment.

Built around an impressive central void, an interconnecting staircase links the floors and leads the eye upwards to the feature ceiling detail and to the 7th floor expansive roof terrace with views across Sydney.

Each workspace floor incorporates a 5km walking track, laid in the brand colours, weaving around the office facilities, up and down staircases and past the internal café on level 6 to encourage staff health and wellness by encouraging everyone to keep their step-counts up.

The office which combines open-plan collaborative working environments with a number of concentrated work rooms through to larger meeting and board rooms. The layout also includes bespoke stand-up meeting hubs called 'REV' spaces, designed for quick catch-ups and informal meetings.

With a focus on creating an environment that supports the productivity and wellbeing of the Greenstone team, the workspace features an internal gym and yoga studio with full shower and bathroom amenities.

Further clever zoning to provide the team with variety of areas for innovation and collaboration as well as a \$1.5m AV enabled training and technology area. Further areas include a challenge and fulfillment zone, and a variety of cafe and socialising spaces.

Client:	Greenstone Financial Services
Project Size:	10,000sqm
Project Value:	\$18.5 million
Delivery Method:	Fixed-price contract

[Click here to watch the video of the completed fitout](#)

In 2018, Greenstone commenced their journey to design and build a modern, vibrant work environment that reflects the company's vision and goals for the future including an ambitious aim of becoming the "Best Contact Centre in Australia".

We partnered with WMK Architecture, Linked Project Management and JDV Projects to commence the design and planning phase of the 10,800m² project. This rigorous process was crucial in ensuring Greenstone was able to maximise our investment and realise our design goals of having a luxe Level 7 Terrace and interconnecting stair case through all 6 levels which would accommodate 800+ employees with sit/stand desks.

It became clear as we neared the commencement of the build in early 2020 that project complexities such as a six month delay in the development, an integrated fit out, additional COVID restrictions and supply chain shortages were going to be critical to navigate to ensure the success of the build. JDV Projects took the challenge head on to deliver the original 30 week program in 27 weeks. Of particular note was JDV Projects' willingness to work with Greenstone and its partners to dovetail operational readiness activities with the build which enabled Greenstone's employees to move in two weeks after Practical Completion.

We are so proud to walk our new employees and partners through our state-of-the-art office and have recently been certified as "A Great Place to Work" with one of our strongest factors being our facilities contributing to a good working environment.

Brenard Grobler, Chief Executive Officer, Greenstone Financial Services

JOHN HOLLAND MACQUARIE SQUARE LEASING SUITE

Working with the team at alkimi on this project, JDV Projects have delivered a new leasing suite for builder John Holland's sales team in the Glasshouse building, Macquarie Square at Macquarie Park.

Taking the space from a concrete shell, the build incorporates boardroom, sales office and entertainment area, with detailed joinery, a mix of carpeted and solid timber floors within this cleverly created 230sqm space in the foyer of the building.

The use of curved partition and glazed walls, sheer curtains, easy to use AV solution, feature lighting and quality finishes have given this multi-functional space a level sophistication and warmth.

Client:	John Holland/Charter Hall
Project Size:	230 sqm
Delivery Method:	Construction Management



HOLLARD INSURANCE

With a desire to provide a 'thank God it's Monday' environment, Hollard Insurance Group chose to engage JDV Projects for their new expansion in Chatswood, Sydney.

Open, bright and fun were key words within the brief; and it has resulted in a workspace that has created spaces and areas that gives their team the choice of where and how to work.

With bright open 'townhall' spaces, small private work/phone booths and break-out areas, the team are encouraged to collaborate and socialise.

The pièce de résistance is an impressive state of the art boardroom capable of hosting all 24 board members at one time. The fully-automated audio visual and room settings are all controlled by a master tablet so that the room can be adapted at the touch of a button. 'Smart glass' provides immediate privacy, going from transparent to opaque in seconds, and a wi-fi and Bluetooth enabled, height-adjustable Microsoft Hub allows a touch screen and interactive experience which allows anyone to connect during the meeting.

Client:	Hollard
Project Size:	2,500sqm
Delivery Method:	Construction Management



“

The greatest thing we did was consult with someone like JDV Projects very early on.

JDV was brought onto this project very early in the piece and we benefited from their experience and their advice the whole way through.

The business moved in on the Monday and by midday, everyone was settled and working... and that to me, is the ultimate compliment to JDV.

Greg Bain, Operations Manager - Real Insurance Hollard Corporate Partners

”



MCCDONALD'S HEADQUARTERS

The team at JDV Projects have completed a 2,500sqm fitout for the McDonald's Head Offices in Thornleigh in collaboration with our design partner, alkimi studio.

The project was run by one of our seasoned Site Managers who not only worked on the new McDonald's fitout, but also on the very first Australian McDonald's restaurant in Yagoona back in the 1970's.

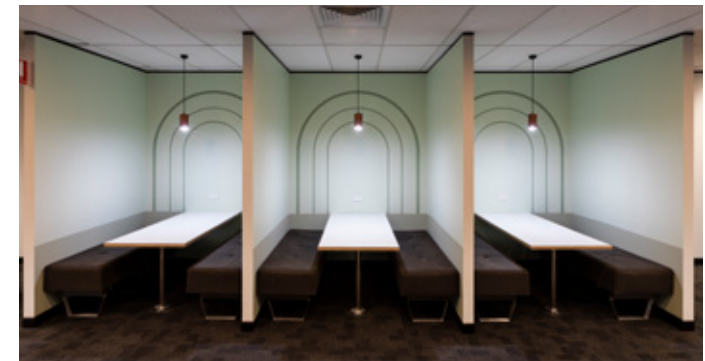
The construction and design personality that was applied to the new office combines the McDonald's brand colours with a hint of retro styling. The subtle use of the familiar arches appear throughout the fitout and a nod to the history of the iconic brand is showcased with a whole wall dedicated to every happy meal toy given away over the years.

A brief to create an expansive breakout area has seen their communal area transformed into a space that can be used for breaks, informal meetings and socialising with the use of generous booth seating built around a team kitchen.

The workspace itself has been created to be an open and bright space. Each team member has an locker to allow them to clear their desks each evening to ensure a thorough clean, in adherence to the new health and safety guidelines that businesses are facing following the changes to workspaces this year.

The addition of task-based areas and rooms have provided a variety of options for the team to use. They include small rooms for individual concentrated work, to collaborative American-diner style booths for collaborative work.

Client:	McDonald's
Project Size:	2,500sqm
Delivery Method:	Construction Management





McDONALD'S, 2,500sam



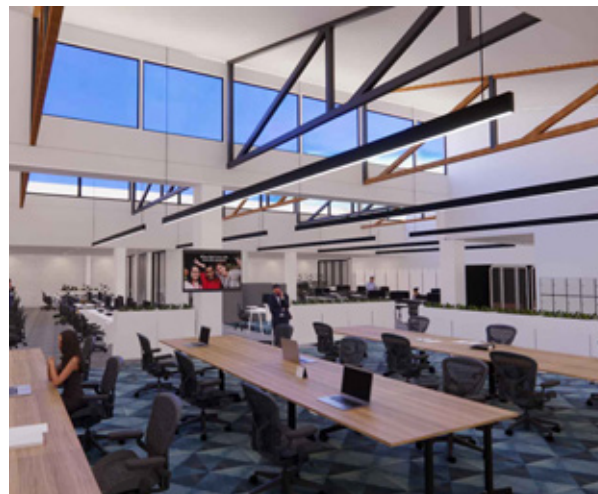
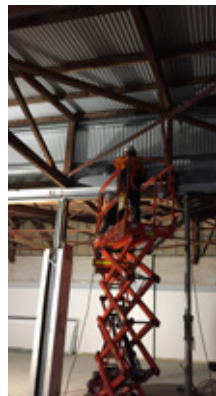


AUSTRALIAN RED CROSS - IN CONSTRUCTION

The team at JDV are currently working with the Australian Red Cross to deliver a new 1,500sqm fitout and refurbishment for their Adelaide team to better enable the ACR team to continue their important work in the community through the power of humanity.

Demolition and construction has commenced on site and we look forward to delivering their space due for completion in October 2021.

Client:	Australian Red Cross
Project Size:	1,500qm
Delivery Method:	Lump Sum Tender





SEEK

JDV Projects were appointed by Seek Limited to complete the interior fitout of level 3 of their North Sydney head office. This was the fourth floor to be completed in a 12-month consolidation program for Seek and Think Education.

The fitout included all client facing spaces, a large boardroom, training areas and a communal breakout area. By aligning with the vision of SEEK, JDV created an impressive and striking design solution featuring wall paneling and joinery that extended the length of the boardroom ceiling and returned down the walls.

With a challenge of timing and logistics, we simultaneously refurbished the base building component of level 3 on behalf of the building owner, INVESTA, resulting in a seamless, integrated program for both the owner and tenant.

The contracting scope of work included demolition of the previous fitout, ceiling refurbishment, new floor coverings, window blinds and a complete lift lobby refit.

Client:	SEEK.com
Project Size:	4,000sqm
Delivery Method:	Negotiated Lump Sum





I want to thank JDV Projects for the extraordinary work you and your team accomplished for us to create a vibrant and innovative new work space. Your team at JDV Projects are simply the benchmark for others to aspire to in the industry. I look forward to working with JDV again very soon.

Brigid Carey - Head of Facilities and Leasing

PRO AV & PROFILE SYSTEMS

This project showcases a light and open workspace, incorporating an industrial look and feel throughout. High ceilings and exposed services give greater depth to the workspace environment. Each of the work zones have been positioned around the central breakout hub, designed to create a common area for the two teams and encourage familiarity between coworkers. This 'townhall' space is fully enabled with the latest in AV technology, showcasing whiteboards and screens that can be used by the teams for get-togethers, socializing as well as brainstorming sessions. The use of smart zoning continues throughout the 1,150sqm space with the creation of a variety of workspace settings for singular or group use. AV enabled banquette seating for informal teamwork, quiet work areas for concentrated work as well as more formal private meeting rooms. The team are able to choose the work-setting they need for their task at hand, enabling team productivity, collaboration and communication. An impressive feature of the workspace is the powder-coated aluminum planter boxes suspended 3 meters above the work areas. The cascading plants soften the industrial feel, whilst providing a conduit for the infrastructure and services such as power and data to the workstations from above. The project included a new warehouse facility with a new mezzanine for great storage and a fully functional AV workshop.

Client:	Pro AV
Project Size:	1,150sqm
Delivery Method:	Construction Management



“

It was a really pleasant experience, JDV handled the project very professionally and kept us informed at all times, raising issues as they arose.

We really enjoyed the project and working with the JDV team. Thank you for the wonderful fitout.”

Gabriella da Graca, Admin Director – Pro AV Solutions

”



SOCIAL SOUP

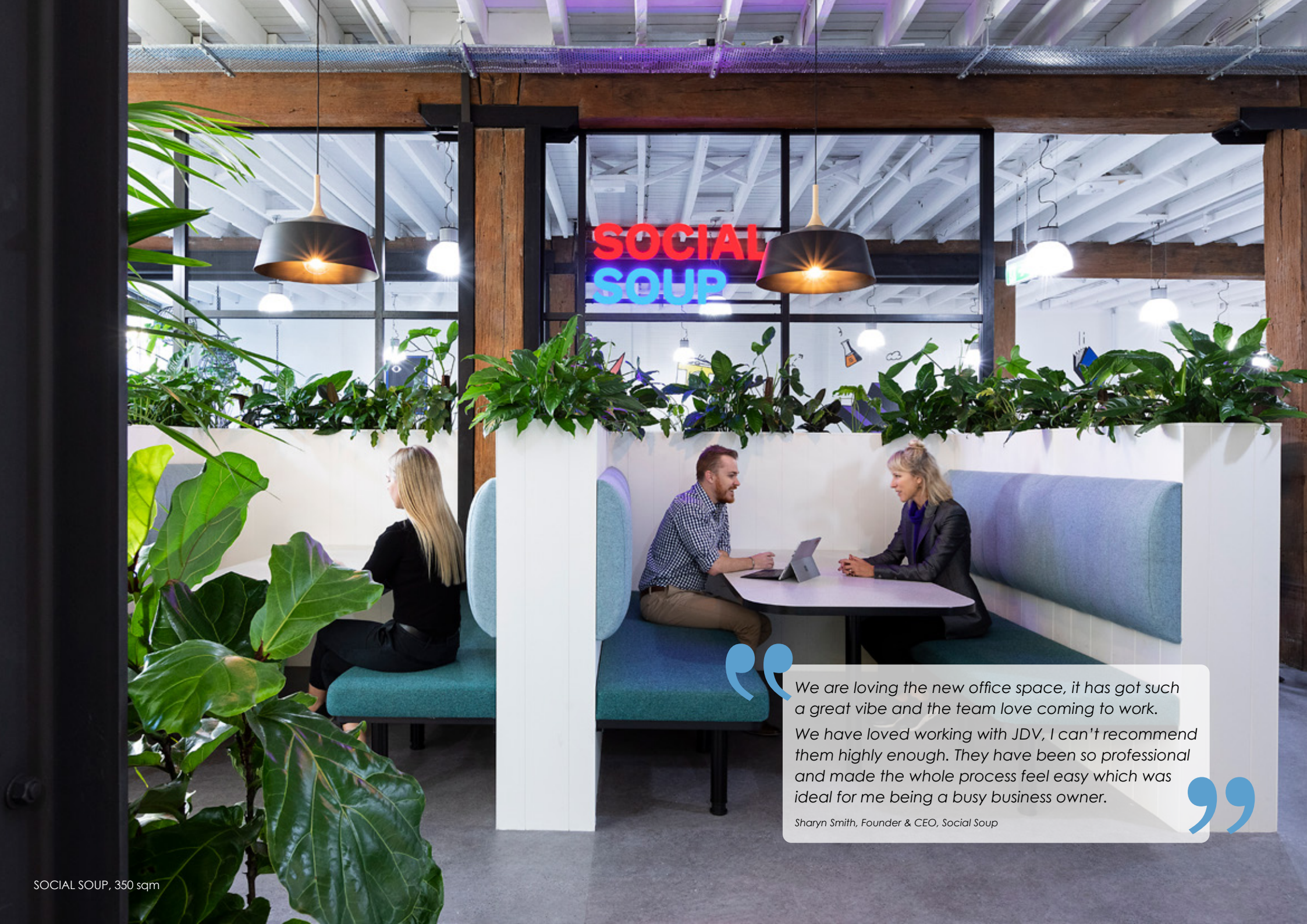
Social Soup, located in a converted warehouse in Surry Hills, the 350sqm space has been designed and constructed to take advantage of the open and generous proportions of the exposed ceilings and expansive windows which flood the space in natural light.

Their brief was to create a workspace representative of the Social Soup brand. The use of bold graphics and colour has not only brought this space to life, but also provided multiple communal areas and defined work zones. This zoning allows an element of flexibility as the business grows and evolves. By creating a variety of casual work and meeting settings such as booth seating and a brainstorming area allows the team to work together, choosing the space for the task at hand.

A generous break-out space and bar ensures that the team have areas to socialise as well as to entertain visiting clients. Vibrant greenery and hanging plants as well as a variety of feature lighting and neon signage add the finishing touches to this fun and quirky space, and the creation of a digital 'fireplace' and hanging chairs allows the space to cross borders between a home and office interior.

Client:	Social Soup
Project Size:	350sqm
Delivery Method:	Construction Manager





**SOCIAL
SOUP**

“

We are loving the new office space, it has got such a great vibe and the team love coming to work. We have loved working with JDV, I can't recommend them highly enough. They have been so professional and made the whole process feel easy which was ideal for me being a busy business owner.

”

Sharyn Smith, Founder & CEO, Social Soup

HIREUP

The exponential growth of hireup was the catalyst for engaging JDV Projects to Design & Construct their new 2,400sqm headquarters in St Leonards, Sydney.

The vision of a brother and sister team who wanted to provide an online platform to revolutionize the way people with disabilities find, hire and manage support workers, the company evolved to over 100 employees in just two years. Seeking a solution that would house their evolution and growth, it was essential that their new environment was inclusive and accessible for all employees and visitors whatever their ability and unique requirements.

Each element was carefully considered to provide innovative solutions for functional space-flow and accessibility that met statutory requirements as well as the unique requirements of the team.

A central hub is created with an extensive break-out space and outside deck which is also the setting for gathering and social interaction. Acting as a dual-purpose zone, the large kitchen and seating area can also be utilised for casual meetings and remote working.

Height-adjustable desks and accessible power outlets create an element of ease and functionality, and careful cable management and underfloor power serves to reduce potential trip hazards or obstacles.

The outcome for hireup is a bright and open workspace, injected with an element of fun and positivity. With a focus on wellbeing, culture and collaboration, this progressive environment caters perfectly to their diverse and growing team.

Client: Hireup
Project Size: 2,400sqm
Delivery Method: Design & Construct



JDV were amazingly accommodating of our slightly unconventional fitout team and were very supportive of us throughout the process as a team that had never done a fitout of the size we undertook together.

We will be recommending JDV everywhere we go!

Harriet Dwyer - Chief of Staff



WORLDWIDE LOGISTICS

National Logistics company Worldwide Logistics has a vision that aligns perfectly with the mission of JDV Projects; to offer a quality and personalised service based on mutual trust and transparency.

Working in a collaborative nature with the team at Worldwide Logistics, the team at JDV in collaboration with designers Wool + Hay created a modern and forward-thinking workspace in their new home in North Sydney. The brief was to create an environment that represented their brand and reflected the culture and essence of their business.

A defining element of the workspace is a striking abstract wall mural of their worldwide shipping routes. The imposing artwork is featured on the boardroom wall gives an insight into the expansive nature of their day to day transactions.

Glass panels which break up the office space allows light to flood through the whole space and the clever use of sliding doors on internal offices allows a degree of flexibility between privacy and the creation of a large open space for staff to gather or for entertaining.

Workstations line the perimeter of the office, ensuring that the whole team can enjoy the natural light floods the office. Muted colours and furniture create a homely feeling within a work environment; a growing trend in the workspace industry.

A well-proportioned kitchen area offers staff a modern and fresh breakout space for entertaining, socialising and casual collaboration.

Client: Worldwide Logistics
Project Size: 450sqm
Delivery Method: Design & Construct



REAL INSURANCE

As part of a large consolidation project, JDV Projects worked closely with Hollard Insurance to manage the relocation of their three business units - Real Insurance, Pet Sure and Velosure - into four floors 4000sqm at their new corporate head office, located in Chatswood, Sydney.

The use of striking colourful graphics differentiates the office zones which include a games room, chill out zones and a large breakout den for the staff to gather, relax and collaborate.

Encompassing both design and construction, a major element of the fitout was to punch an internal stair between the floors to open up the space and connect each of the business units. Complex demolition and structural support associated with the cascading through the stair void – one of the tallest internal green walls in Australia.

Client: Real Insurance
Project Size: 1,000sqm
Delivery Method: Project & Construction Man.



The greatest thing we did was consult with someone like JDV, very early on. JDV was brought onto this project very early in the piece and we benefited from their experience, we benefited from their advice the whole way through. The business moved in on the Monday and by about 12pm everyone was settled and working.....that to me is the ultimate compliment to JDV.

Greg Bain - Operations Manager



J WALTER THOMPSON (JWT)

Located in one of Sydney's historic wool store buildings in Pyrmont, JWT's new workspace was designed by leading Global Design firm Geyer. Their vision and style transformed levels 7 & 8 from a standard commercial floor space to a raw industrial feel office environment, responding to and incorporating the historical fabric of the building.

The design draws on the historic features of the building and fuses these into a modern and urban edge environment.

JDV Projects partnered with leading Commercial project management firms, Savills and East View Commercial via separate Construction Management agreements to deliver this impressive space that includes a new interconnecting steel/timber stair and mezzanine between levels and a new glass shaft lift connecting the work area on one level to a series of meeting venues and breakout area, including a roof top timber deck/terrace venue for staff and client entertaining with sweeping city views over darling harbour.

Client:	JWT Advertising & Arena Funds Management
Project Size:	1,800sqm
Delivery Method:	Lump Sum & Construction Management (2 contracts)



CEREBOS/KRAFTHEINZ

Following a complete demolition back to base-build, an open and modern space has been created to encourage collaboration and interaction between the team.

The brief and drivers for change outlined requirements for an extended workspace to accommodate their business growth. Additional zones and enclosed spaces have been created, from small quiet rooms for concentrated work, to a more formal 18-person boardroom.

Each new space was brought to life with unique graphics that connected with their brand identity. Use of printed wall murals, laser cut signage and quirky green walls adds personality and pops of colour to the workplace. A new "Townhall" area has created a central hub for the team. Designed to encourage team integration, this large open indoor/outdoor breakout space and deck is perfect for company meetings, collaboration and socialising.

Client:	Cerebos/KraftHeinz
Project Size:	2000sqm
Delivery Method:	Construction Management



PETSURE

The objectives for Petsure's new fitout were to design and create an office environment that could evolve and adapt with their growing business.

JDV Projects worked closely with Petsure and the interior designer to develop a workspace that would encourage productivity and where team members could engage and collaborate.

Bold graphics line the walls giving the space personality whilst creating an office that mirrors the cultural footprint of the business and captures the "thank god its Monday feel" to the environment that's basically fun to be at.

Client: Hollard Insurance
Project Size: 1,700sqm
Delivery Method: Construction Management

From the outset, I knew I was in the hands of the experts and was pleasantly surprised by how the project was managed in such a highly co-ordinated manner.

My involvement was well managed with a focus on key issues ... and I was provided with comfort about the level of detail and volume of work that was being carefully managed by the broader team.

JDV Projects have delivered to the promise, and we moved in on the target date with a seamless transition. We are all incredibly proud with the workspace we now have.

Peter Kerr - Chief Operating Office, PetSure



MASTERPET

Masterpet's new offices represent the culture of the business, whilst maintaining good functionality and office space planning for their growing business. Construction of an internal wall made from custom built wooden pallets, amphitheater seating for staff meetings, open kitchen and breakout areas that blend with the office design, meeting rooms and booths and utilities spaces all created to improve office cohesion and productivity.

Client: Masterpet
Project Size: 600 sqm
Delivery Method: Construction Management



THINK EDUCATION THE ROCKS & ULTIMO CAMPUS, SYDNEY

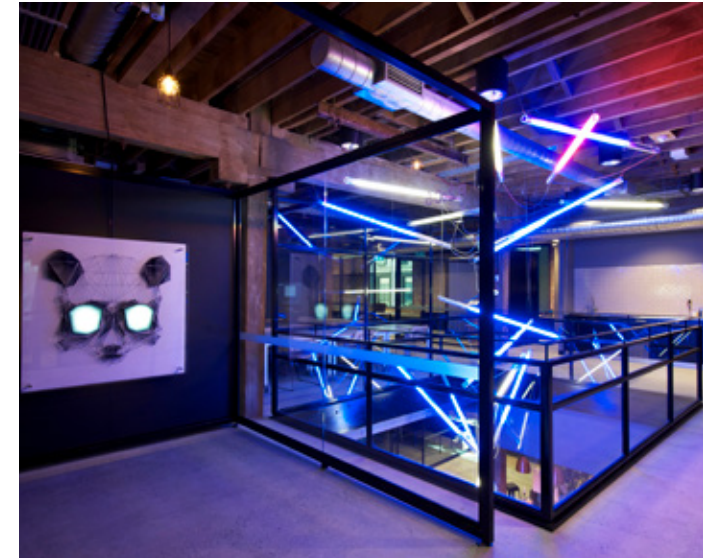
Following the successful completion of the Ultimo Campus - a vast 4,200sqm space created a modern edge within a historic heritage building - JDV worked alongside THINK again to create another cutting edge learning facility.

The challenge was to create an agile and collaborative facility on a relatively tight budget. The final result incorporated green walls, exposed timber ceilings and an eclectic variety of furniture which enabled students to gather in different settings and group areas.

Client:	THINK Education, The Rocks
Project Size:	The Rocks, Sydney - 1,500sqm
Project Size:	Ultimo - 4,200sqm
Delivery Method:	Project & Construction Management



WINNERS OF THE NSW MBS AWARD
FOR EXCELLENCE IN CONSTRUCTION
INTERIOR FITOUT \$5 - \$7.5 MILLION





In 2014, when Think Education created a brand new learning centre for their Design Faculty, JDV were contracted to help steer us throughout the process.... JDV were utterly committed to every part of the process including helping us to deliver a custom designed audio-visual technology solution that now allows ultimate flexibility within our learning spaces.

JDV understand client restraints and will always work hard within these to deliver a first class end product.

Their commitment to their client is beyond reproach. Their background in commercial and education design projects also means they have an in depth understanding of contemporary drivers in commercial design. I look forward to a long relationship with JDV on future projects.

*Michael O'Brien - Project Manager - Campus strategy & Design
Head of Academic Studies, Interior Design CATC & Billy Blue College of Design*



HEART & BEYOND

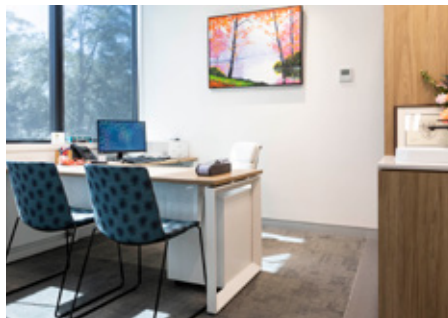
The team at JDV Projects are excited to hand over our tenth medical suite fitout at the SAN Parkway Clinic in Wahroonga. Heart and Beyond is a specialist cardiology centre run by Dr Viswanathan Venkatachalam, an interventional cardiologist who has a belief and mission to deliver care with positivity and happiness.

In line with this philosophy, the suite was designed and constructed to be a warm and welcoming space that is the antithesis of the traditional stark and clinical design model of healthcare facilities.

Clever space-planning has maximised the use of the modest 123sqm space, incorporating three consulting rooms, a stress-testing lab and echo room. A generous reception area provides seating for ten patients using the Heart & Beyond brand palette for the seating and bespoke banquette area. Tucked in behind reception is a back-of-house office and a generous kitchen and breakout area for the team.

The warm timber finishes are complimented by a planted green wall and a variety of artwork including one which features positive affirmation statements that display Dr Viswa's philosophy to patient treatment.

Client: Dr Viswanathan Venkatachalam
Project Size: 123sqm
Delivery Method: Design & Construct

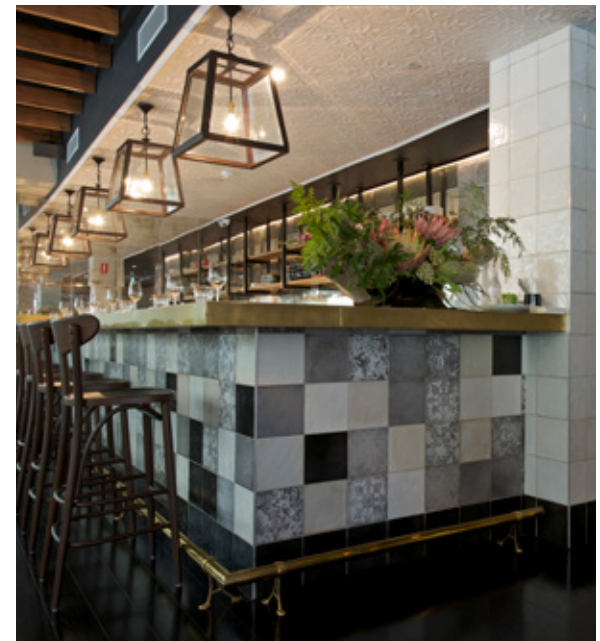


LE PETIT FLOT - TANK STREAM HOTEL

JDV's fitout experience extends into the hospitality industry, and the most recently completed project is Le Petit Flot located in the Tank Stream Hotel in Sydney's CBD.

The Contemporary French casual dining styled Restaurant and Bar is separated by a stunning feature stair case. The project incorporates a Bar, Kitchen, seated Restaurant, Private dining room and downstairs Cafe.

Client:	JDV Projects
Project Size:	350sqm
Delivery Method:	Design & Construct



PENINSULA ORTHOPAEDICS

The new home for Peninsula Orthopaedics is located in the new state-of-the-art Northern Beaches Hospital. Situated on the 7th floor, the stunning new medical facility offers impressive views across the Northern Beaches.

Entry is gained through large glass sliding doors where patients are greeted by an impressive eight-person reception which caters to the seven consulting rooms, one hand therapy room and two cast rooms within the clinic.

The modern and bright reception area has comfortable surroundings and seating for fifty patients, using a custom-made circular banquette as a focal point. The area features a range of bespoke elements and is complimented by vibrant colours and subtle lighting which creates a warm and welcoming environment as opposed to a stark and clinical environment.

The use of environmentally friendly products can be seen throughout the space. Materials include Plyboo, a natural bamboo timber which creates a textured acoustic featured wall behind the signage and a hand-crafted environmentally-friendly panelling from Stonini – an innovative and customisable product is used behind the reception counters walls creating warm and texture to the space. The custom-built curved reception counters use Marblo solid surface and Plyboo to complete the warm and inviting appeal of the practice.

The back-of-house office houses a bright and open work environment for the team with workstations, a break-out space and utilities.

Client:	Peninsula Orthopaedics
Project Size:	450sqm
Delivery Method:	Design & Construct



The fitout for Peninsula was a big and complicated project, tricky at times, having multiple parties to consult and coordinate with; however, JDV managed things effectively, efficiently and professionally and achieved a fabulous outcome for our group.

They have that rare "can do" attitude and I cannot recommend them highly enough. It was a big project handled professionally in every way. Thank you JDV!

*Jenny Slatyer, Business Manager
Peninsula Orthopaedics & Sports Medicine*



DR. RANDOLPH GRAY

The new Parkway SAN Clinic building based at the Sydney Adventist Hospital is creating a hub of specialist practitioners in Wahroonga, separate from the hospital location whilst close enough for convenient access.

In addition to his current suites, Orthopaedic and Spinal Surgeon Randolph Gray engaged JDV Projects to create his first dedicated medical suite at this new and impressive building.

The 100sqm space has been designed with an efficient use of space and logical flow, to accommodate 3 consulting rooms and a small breakout space. The generous reception area features a 2-person reception desk and seating for 14 patients with a feature upholstered banquette seating.

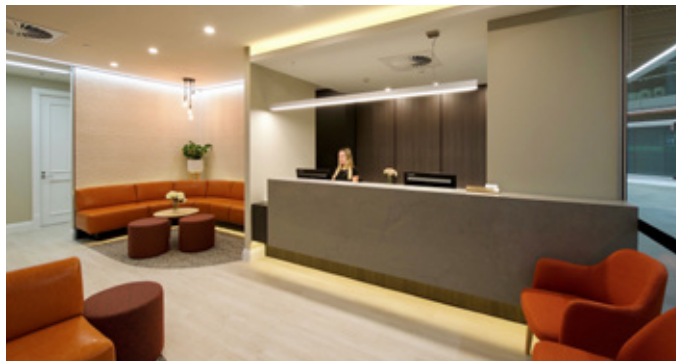
A colour palette of earthy neutral tones is complimented by stone finishes and timber wall panelling to create an elegant and refined environment for Dr. Gray's practice.

Client: Dr. Randolph Gray
Project Size: 100 sqm
Delivery Method: Design & Construct



JDV Projects have a highly professional team that did an excellent job; starting with the planning of the project through to its execution. I would highly recommend this great team.

Dr. Randolph Gray, Spinal Surgeon - SAN Parkway Clinic



DR MAX DIAS

The new medical suite for Dr Max Dias is the perfect example of design and elegance.

Showcasing 2 consultant rooms, a treatment room, practice managers office, kitchen and impressive reception desk, the move from the SAN Hospital to the new SAN Parkway has given Dr Dias a fresh new space to see his patients.

The suite utilises every inch of the 86 m2 with a commanding front reception with under bench lighting and panelled wood work on entry.

Client: Dr. Max Dias
Project Size: 86 sqm
Delivery Method: Design & Construct

I would like to thank the JDV team for delivering a beautiful and functional suite.

Their early involvement and collaboration with the designer has resulted in a functional, spacious and aesthetic design and a seamless balance between clinical and a stylish, warm space.

Dr Max Dias, Urological Surgeon -SAN Parkway Clinic



DR MICHAEL TJEUW

The new Parkway SAN Clinic building based at the Sydney Adventist Hospital is creating a hub of specialist practitioners in Wahroonga, separate from the hospital location whilst close enough for convenient access.

Consultant Rheumatologist Dr Michael Tjeuw engaged JDV Projects to design and build his first dedicated consulting rooms for his practice.

The 88sqm space is open to the natural light and boasts scenic views across the nature reserve behind the Parkway building. With this in mind, the space has been planned so that the larger 2 of the 3 consulting rooms can enjoy this light and view.

The welcoming reception area comprises of a 3-person reception desk and a feature banquette providing seating for 12 patients.

Timber finishes create a soft and earthy feel and splashes of teal blue provide a pop of colour.

Dr. Tjeuw's personality and brand is created with the use of his personal artwork to create focal points around the consulting practice.

Client: Dr. Michael Tjeuw
Project Size: 88 sqm
Delivery Method: Design & Construct



JDV projects made the whole process of design and fitout of our medical specialist rooms a straightforward, well thought-out and smooth process.

We felt our needs were listened to...And that took away a lot of stress that's normally involved in a new build.

We would highly recommend JDV Projects to other healthcare professionals

Dr. Michael Tjeuw, Rheumatologist Consultant - SAN Parkway Clinic

FURTHER INFORMATION



ENVIRONMENTAL, WH&S AND QUALITY ACCREDITATION POLICIES

LICENCES

NSW Building Licence No. 245801C
VIC Building Licence No. CBL 37148
ACT Building Licence No. 20138
QLD Building Licence No. 1252854
SA Building Licence No. BLD 307268.

INSURANCES

Public Liability and Contract Works - \$20 million
MBA Insurance Policy No. 01D1996066
Professional Indemnity - \$5 million
MBA Insurance Policy No. MI-SY-04-127290-PI
Workers Compensation - Unlimited
icare Policy No. 109002001

CERTIFICATIONS

JDV Projects is certified and registered through
Global Compliance Certification (GCC) according to:
ISO 9001:2015 Quality
ISO 14001:2001 Environmental
AS/NZS 4801:2015 Work Health & Safety



AFFILIATIONS



QUALITY ASSURANCE SYSTEMS

At JDV projects we operate a cloud-based integrated Project management & document control system, through the secure and controlled software program PROCORE which is one of the world's leading construction management software program.

The system provides a step by step, audited project delivery system ensuring the timely completion, verification and approval of each phase of the project.

- » Secure cloud-based documentation control software
- » Real time access for all stakeholders, clients, consultants, sub-contractors and the project owners
- » Permission based access for confidentiality
- » Document Control & transmittals
- » Shop drawings & sample approvals
- » Request for information tracking & closing
- » Inspections, test plans and progressive signoff/approvals
- » PCG Meeting and progress reporting/photos
- » Site Safety management
- » Observations & Defects capture Management progress
- » Safety, Quality, Environmental & Financial Management



SELECTED CLIENTS



SOME OF OUR VALUED CLIENTS INCLUDE:

Hines

Hollard.

AUSTRALASIAN
COLLEGE OF
NATURAL THERAPIES®

KraftHeinz



CBRE

JOHN
HOLLAND



Jora
Australia

AMP

J. WALTER THOMPSON



mirvac



masterpet
never met a pet we didn't get

PetSure



groupm



THINK
EDUCATION



 Unit 16, 78 Reserve Road, Artarmon NSW 2064
 +61 (2) 9805 6100
 info@jdvgroup.com.au
 jdvprojects.com.au

